

FIG. 1

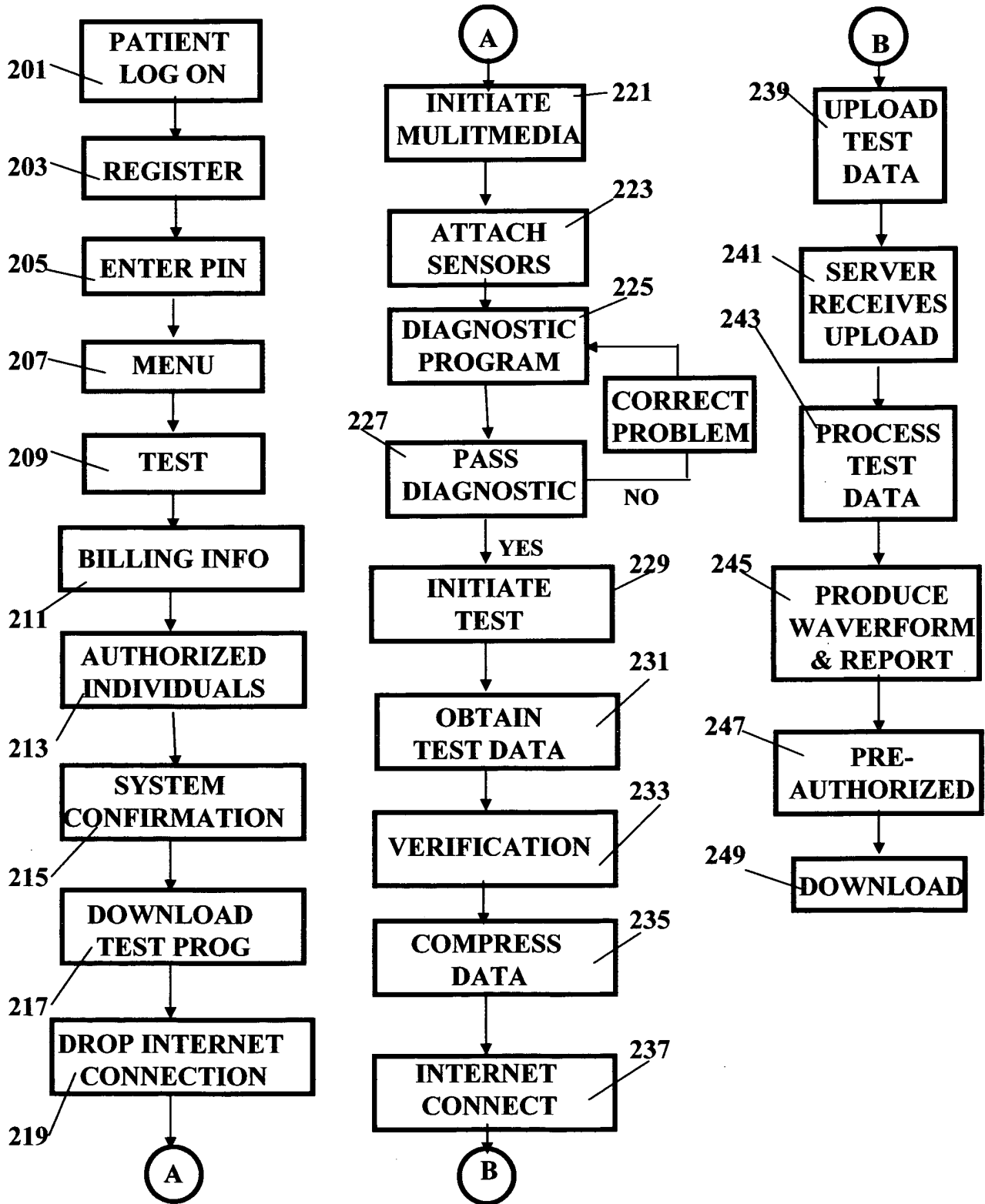


FIG. 2

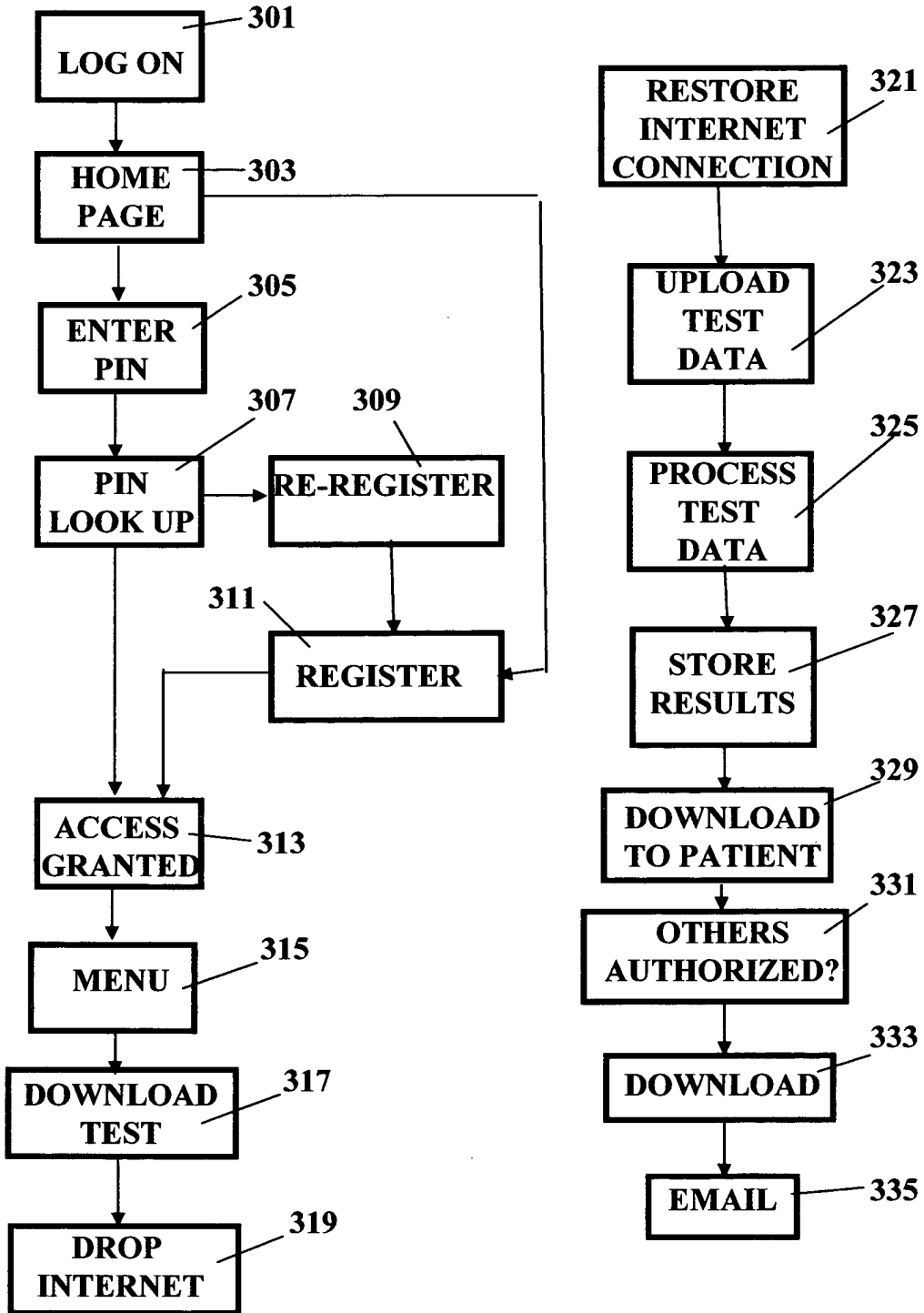


FIG. 3

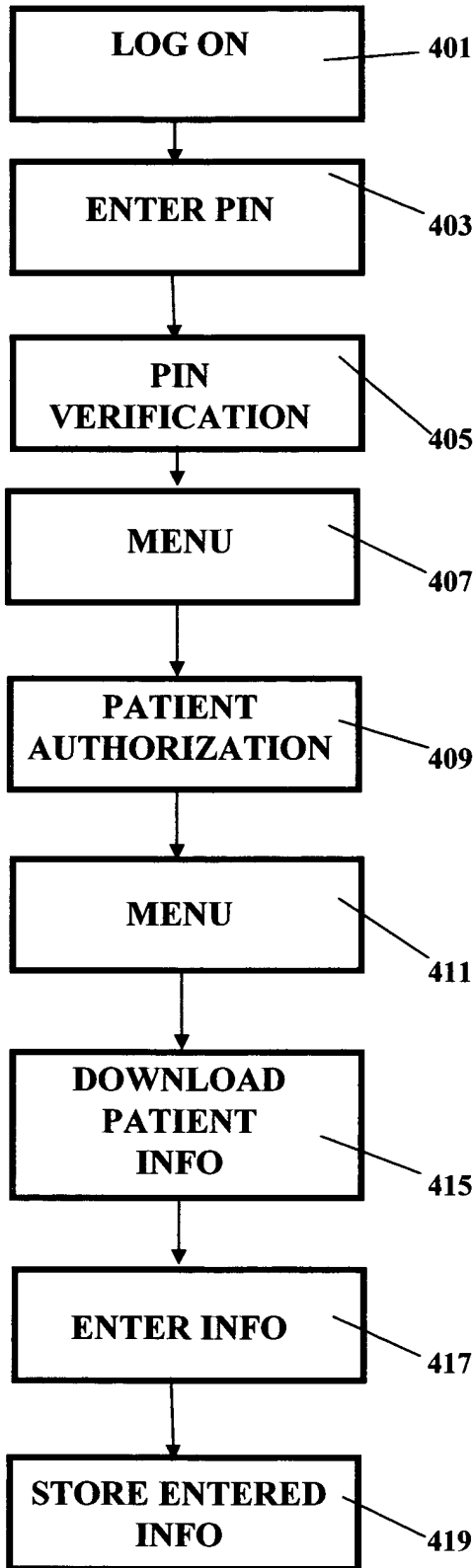


FIG. 4

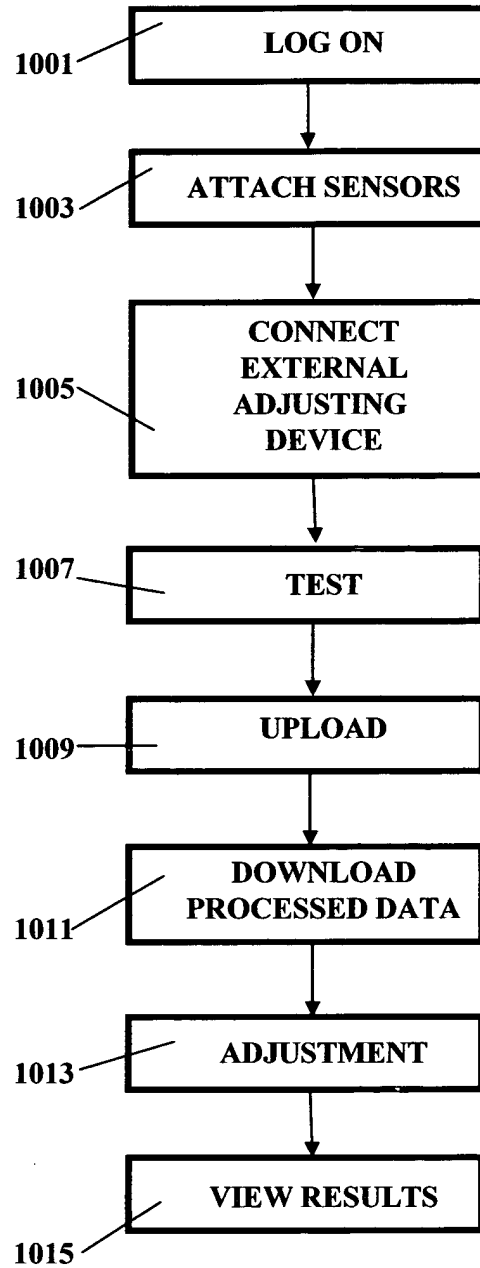


FIG. 10

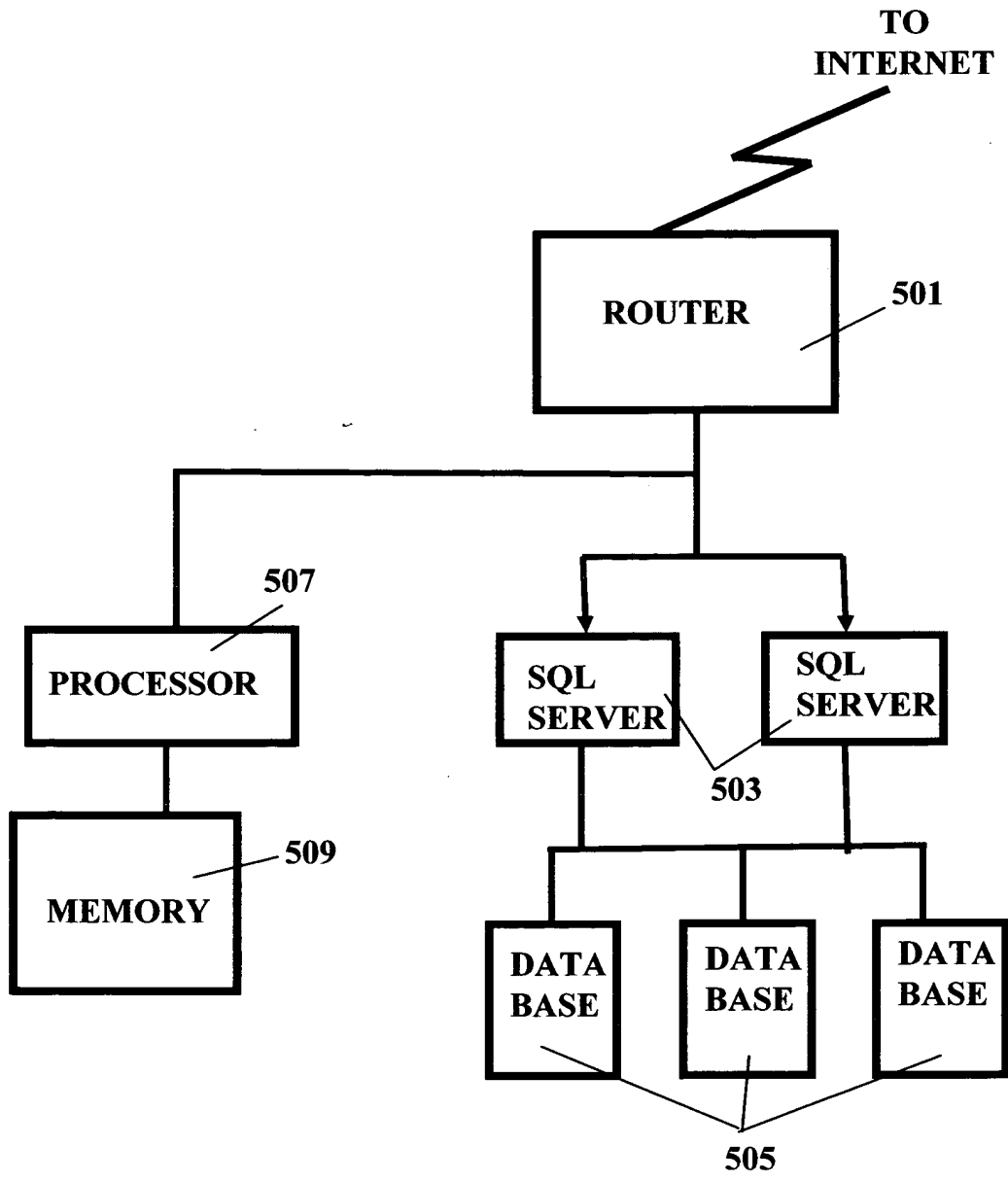


FIG. 5

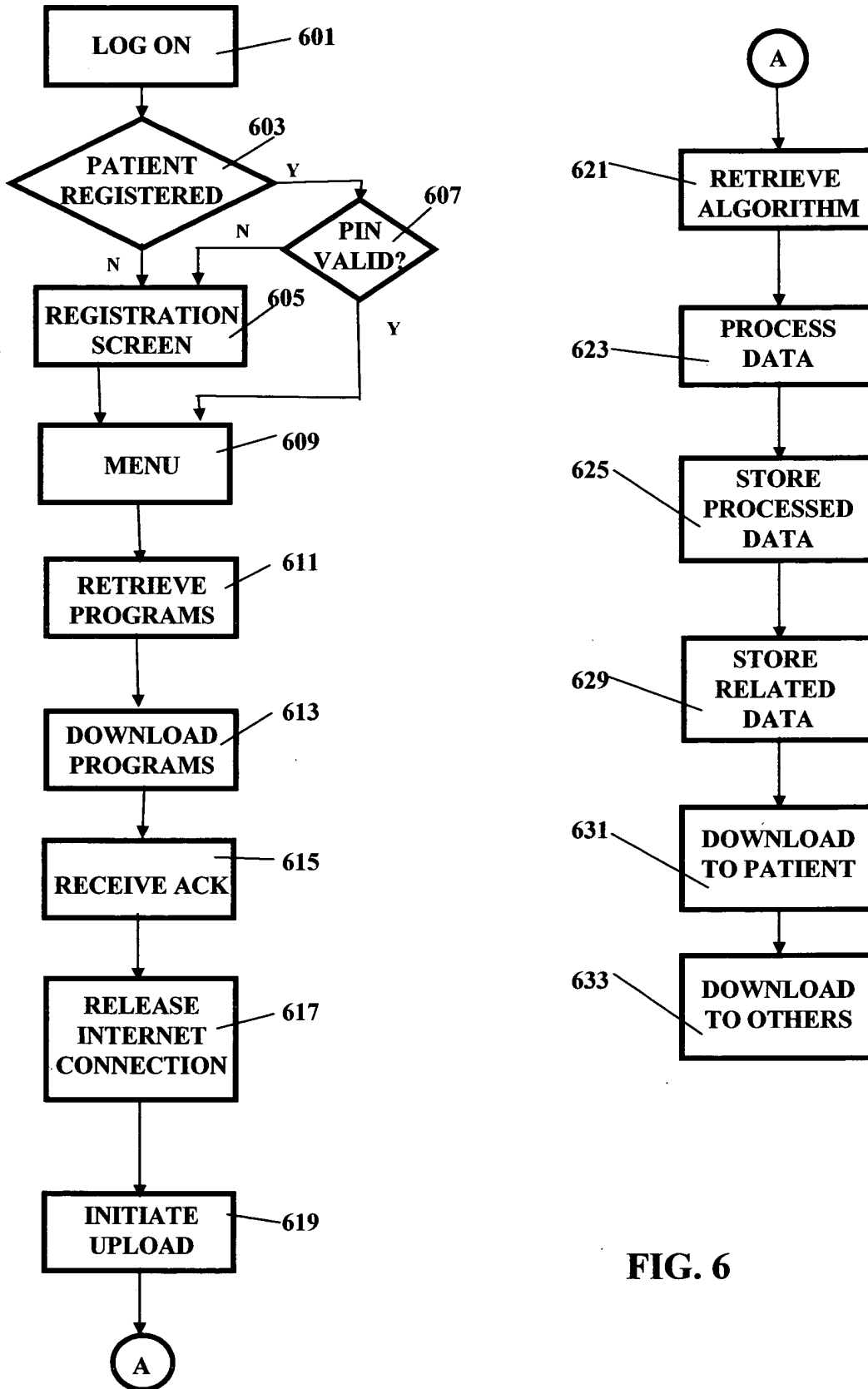


FIG. 6

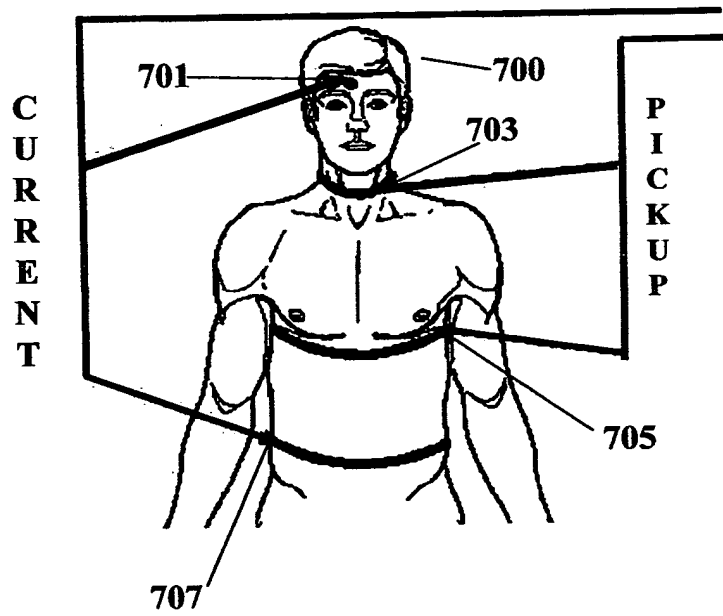


FIG. 7

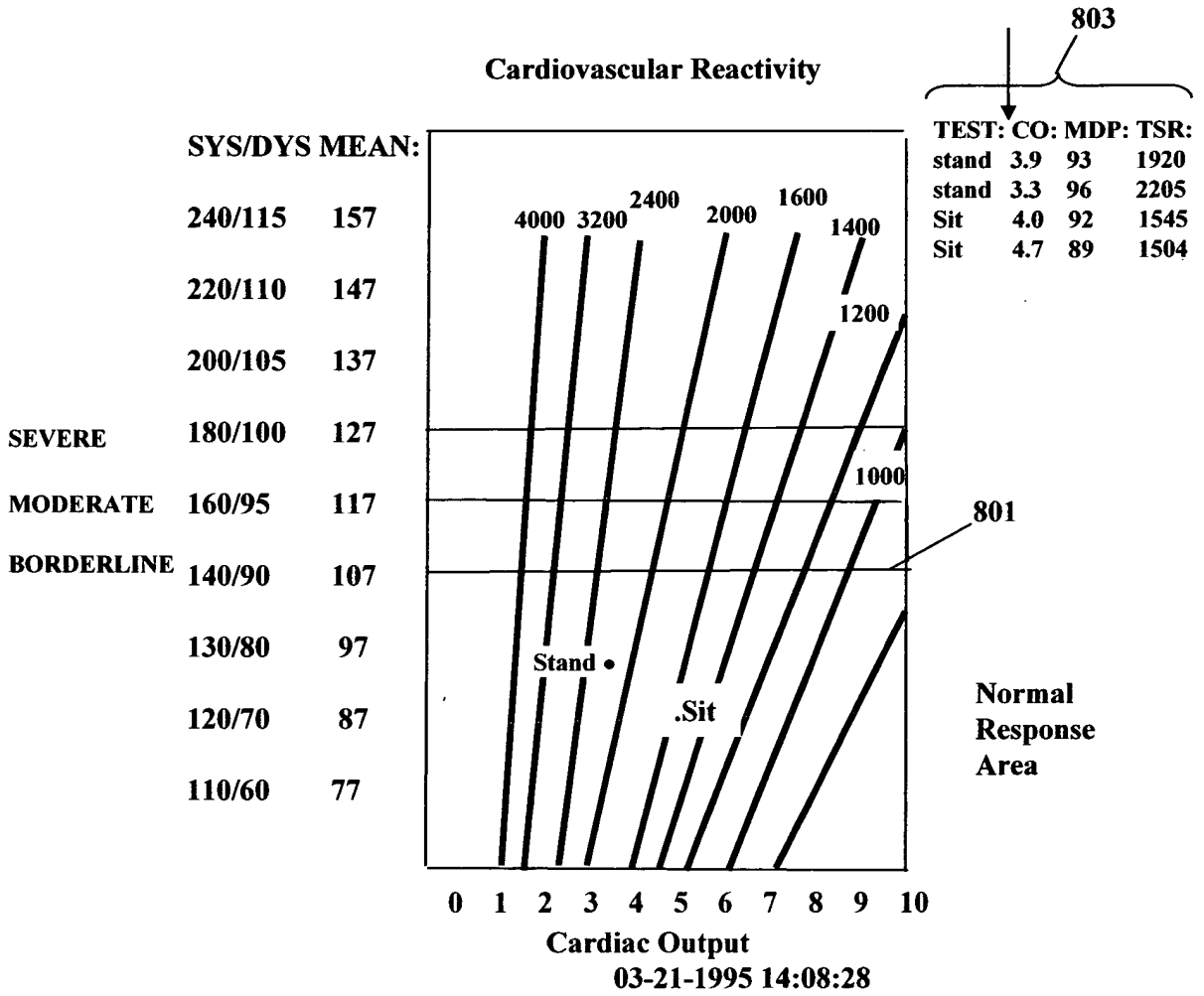
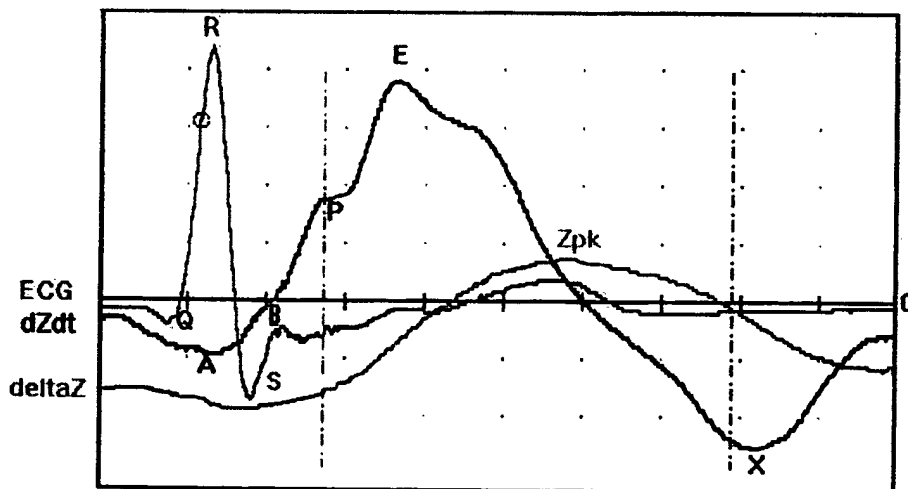


FIG. 8

FUNCTION	NORMS:	TEST:	DIFF:
SYSTOLIC BLOOD PRESSURE	120	125	+5
DIASTOLIC BLOOD PRESSURE	80	85	+5
MEAN BLOOD PRESSURE	93	98	+5
STROKE VOLUME INDEX	36.4	23.4	-13
TOTAL SYSTEMIC RESISTANCE	1247.7	1804.6	+556.9
CARDIAC INDEX	2.8	2.1	-.7
HEART RATE	77	88	+11
VASCULAR RIGIDITY	1.10	1.71	+.61
MEAN SYSTOLIC EJECTION RATE	131.5	62.7	-68.8
STROKE WORK INDEX	46.2	31.3	-14.9
LEFT VENTRICULAR EJECTION TIME	.277	.373	+.96
PRE-EJECTION PERIOD	.115	.055	-.60
PLR = PEP/LVET RATIO	.417	.146	-.271
HEATHER INDEX	n/a	5.9	n/a
DZDT (FIRST DERIVATIVE OF ZO)	1.93	.99	-.94
ZO (TRANSTHORACIC IMPEDANCE)	25.3	25.9	+.6
STROKE VOLUME	77.5	49.8	-27.7
CARDIAC OUTPUT	6.0	4.4	-1.6

FIG. 9

Male 55 years old- Jim Smith- Test Date 01-01-2000



Major Functions	NORMS	TEST RESULTS	DIFFERENCE
Cardiac Output	6.0	4.4	-1.6
TSR	1247.7	1804.6	+556.9
Stroke Volume	77.5	49.8	-27.7

SAMPLE- PERFORMANCE REPORT

Supine L/Zo ratio is normal at 104%. Supine stroke volume index is low at 23.4 with mildly increased TSR of 1804.6. The heart rate and blood pressure remain relatively unchanged. These findings indicate The patient is on the ascending limb of the Starling curve and no further modification in current therapeutic regimen is necessary at this time.

FIG. 11